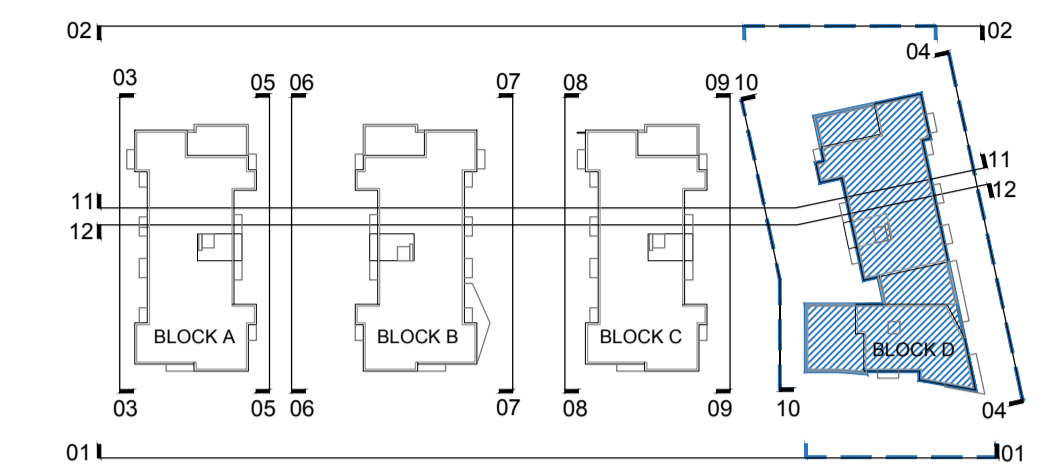


## GENERAL NOTES

THIS DRAWING TO BE READ IN CONJUNCTION WITH ARCHITECT'S DRAWINGS, CONSULTANT ENGINEER'S DRAWINGS AND SPECIFICATIONS, AND LANDSCAPE ARCHITECT'S DRAWINGS AND SPECIFICATIONS.



## GENERAL NOTES

1. THIS DRAWING TO BE READ IN CONJUNCTION WITH ARCHITECT'S DRAWINGS, AND CONSULTANT ENGINEER'S DRAWINGS AND SPECIFICATIONS.

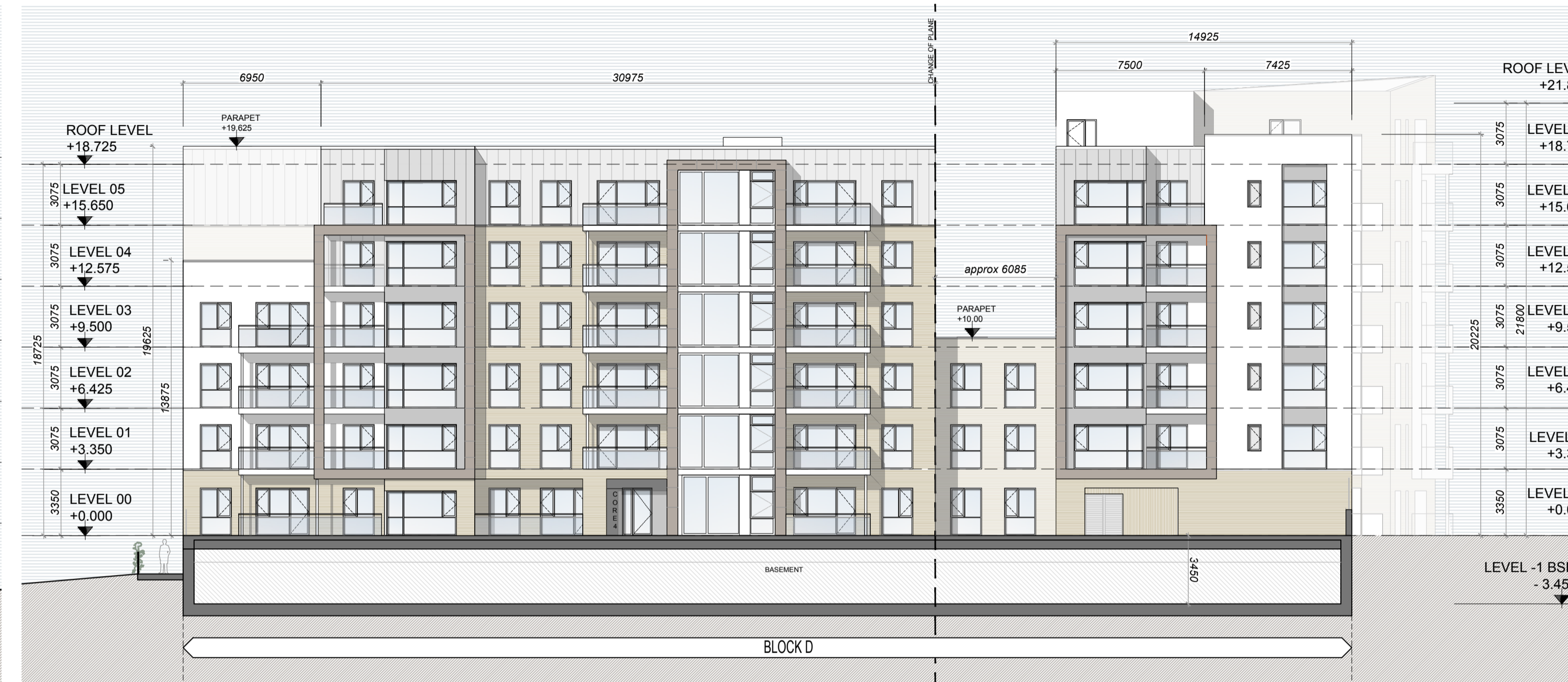
2. THE LEVELS ARE TAKEN FROM GROUND FLOOR AT LEVEL +0.00  
CORE 01 AND CORE 02 SITS AT LEVEL +13.75  
CORE 03,04 & 05 SITS AT LEVEL +13.30

### NOTES ON FINISHES:

- ROOF: TO BE FINISHED WITH METAL CAPPING
- WALLS: TO BE FINISHED IN SELECTED BRICKWORK, SELECTED RENDER, FRAME FACADE IN SELECTED STONE NATURAL OR RECON, METAL CLADDING IN SELECTED COLOR, AS INDICATED AND PRESSED METAL IN SELECTED COLOR AS INDICATED.
- WINDOW/DOOR: ALL WINDOWS AND DOORS, FRAMES AND LEAVES, TO BE ALUMINUM POWDER-COATED OR uPVC, TO APPROVED COLOUR
- RAINWATER GOODS: TO BE uPVC / ALUMINIUM TO SPECIFICATION.
- BALCONY: HANDRAILS TO BE MILD STEEL GALVANISED AND PAINTED TO SELECTED COLOUR WITH SAFETY-GLAZED BALUSTRADES.



BLOCK D - SOUTH ELEVATION - 01



BLOCK D - WEST ELEVATION - 03



BLOCK D - NORTH ELEVATION - 02



BLOCK D - EAST ELEVATION - 04

## NOTES:

DO NOT SCALE FROM DRAWINGS. WORK TO FIGURED DIMENSIONS ONLY. ARCHITECT TO BE NOTIFIED OF ALL DISCREPANCIES.

CLIENT:		REVISIONS		No.
DATE	DESCRIPTION	DATE	DESCRIPTION	
09/10/2019	ISSUED FOR PLANNING			A

	PROJECT TITLE:	PARKSIDE 4, Parkside, Dublin 13	DATE:	OCT'19	DRAWN BY:	IDF
	DRAWING TITLE:	BLOCK D ELEVATIONS	SCALE:	1:200@A1	REVISION:	A
	JOB NO.:	11002.6	DRAWING NO.:	PL024		
	<small>1 Grafton Street, Dublin 8, D08 A49Y, Ireland. Tel: 01-4787000 Fax: 01-4787111 E-Mail: mcm@mcm.ie</small>					